

# Phifertex<sup>®</sup>

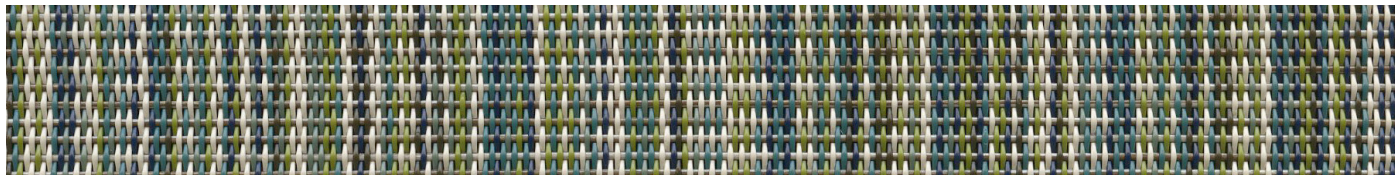
BY PHIFER



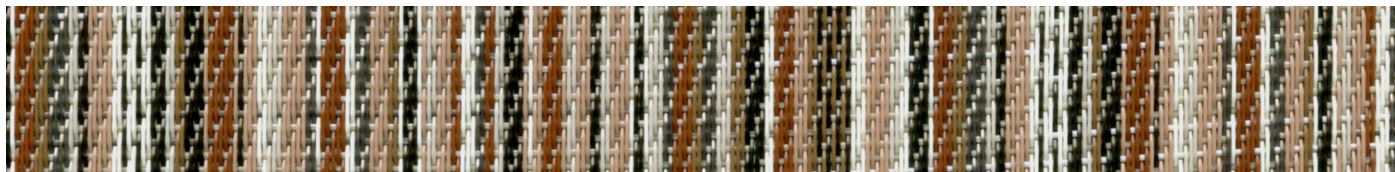
Phifertex Stripes  
Slingable Fabrics



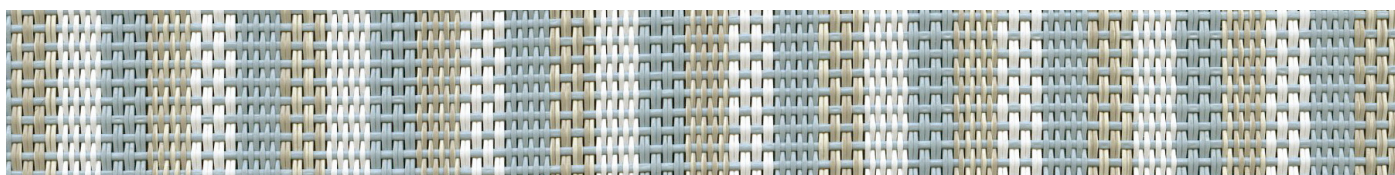




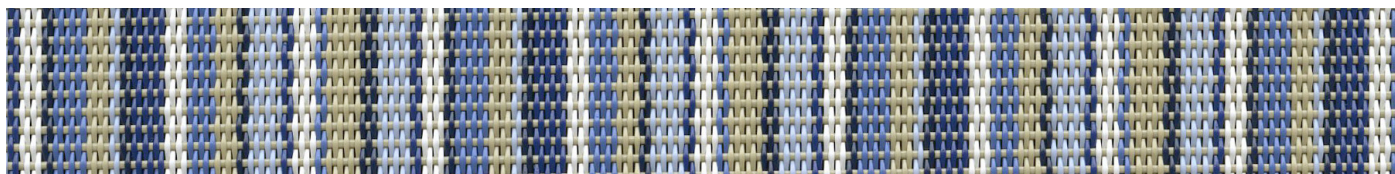
Trixie Stripe Myrtle | LDB | 3034328 | Construction: 42x14



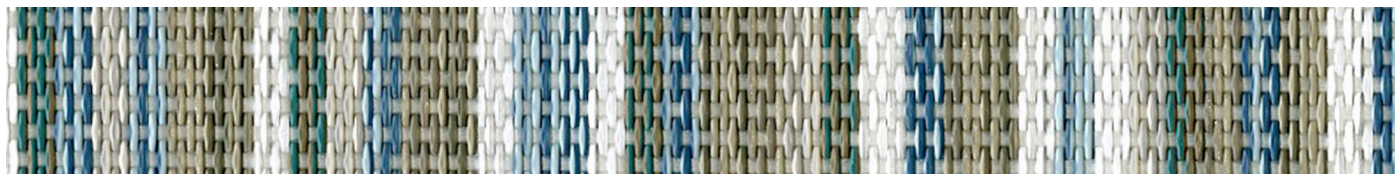
Brooklyn Stripe Clay | KDW | 3042899 | Construction: 42x14



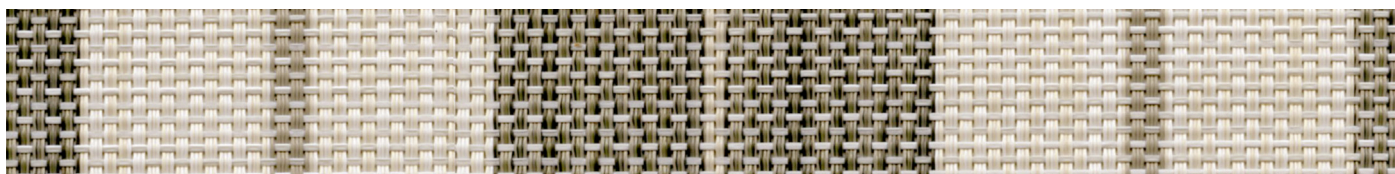
Aquafino | GY0 | 3009436 | Construction: 42x14



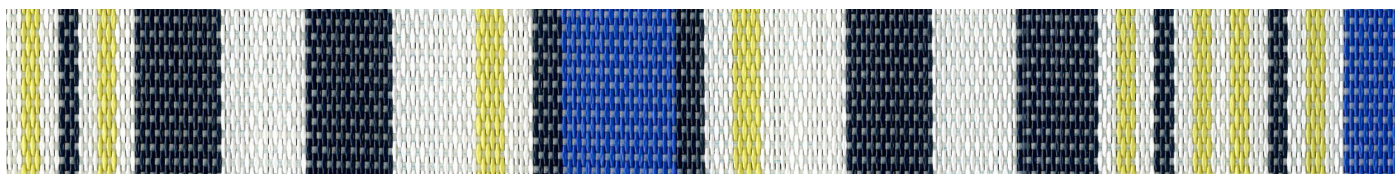
Delray Stripe Poolside | L38 | 3021370 | Construction: 42x14



Coco High Tide | LIT | 3039251 | Construction: 42x14



Spectrum Stripe Dune | ZHU | 3044374 | Construction: 42x14

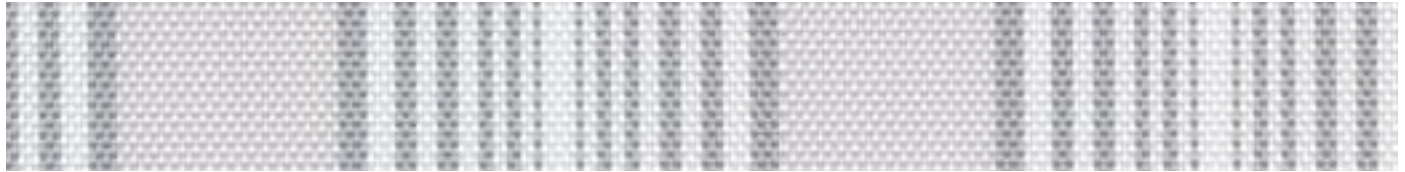


Maui Royal | LIS | 3039255 | Construction: 42x14

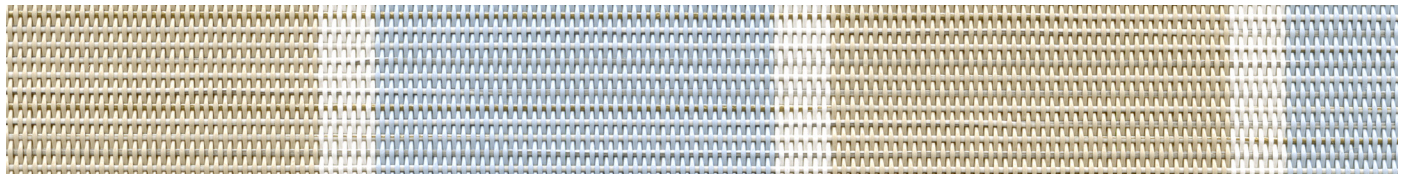




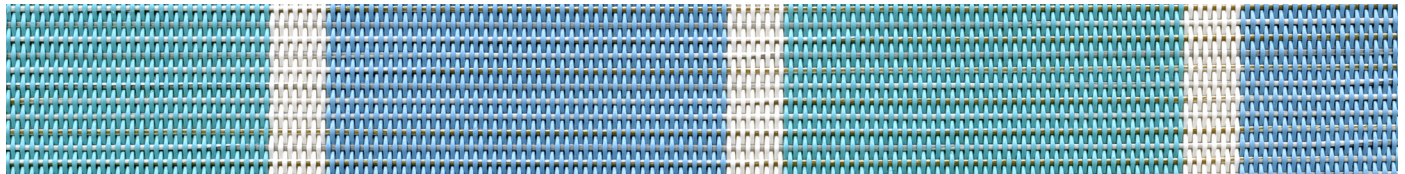
Cole Stripe Riviera | LLR | 3042900 | Construction: 42x14



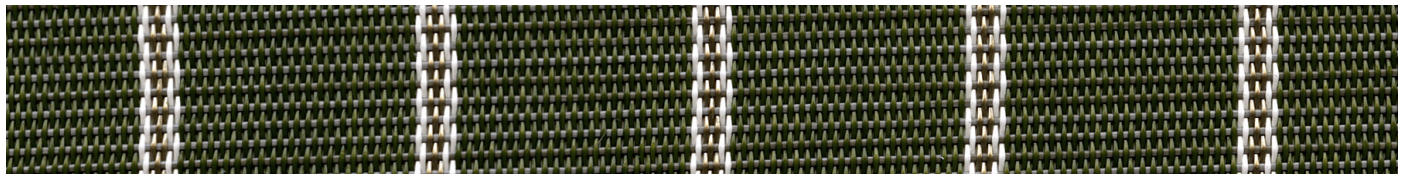
Gradient Cabana Silvermist | 0LR | 3042901 | Construction: 42x14



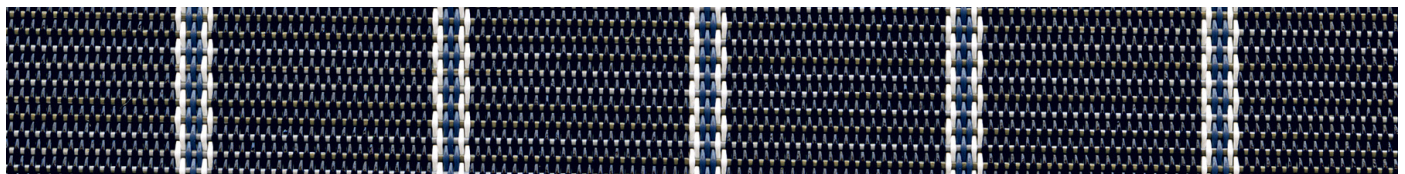
**NEW** | Fiji Stripe Morning Blue | LPS | 3047313 | Construction: 42x14



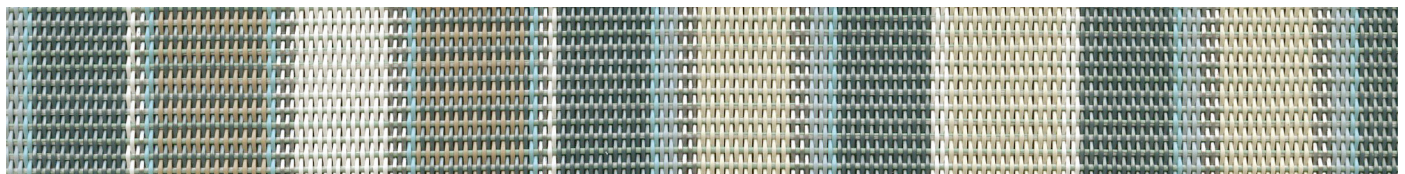
**NEW** | Fiji Stripe Aqua | LPT | 3047312 | Construction: 42x14



**NEW** | Whisper Stripe Moss | DEQ | 3047315 | Construction: 42x14

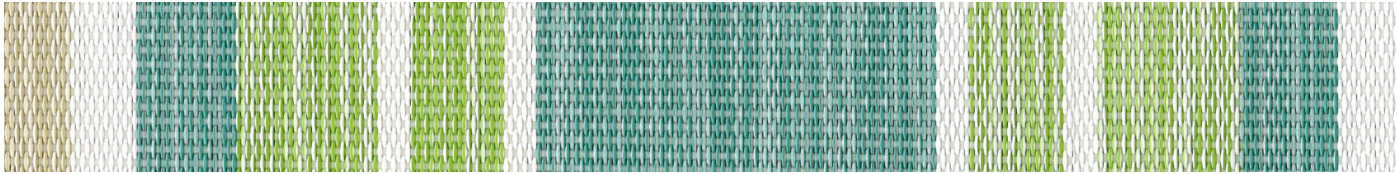


**NEW** | Whisper Stripe Navy | LPU | 3047314 | Construction: 42x14



Windsor Stripe Spa | L09 | 3016027 | Construction: 42x14

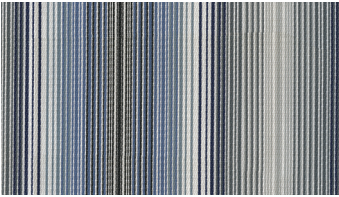
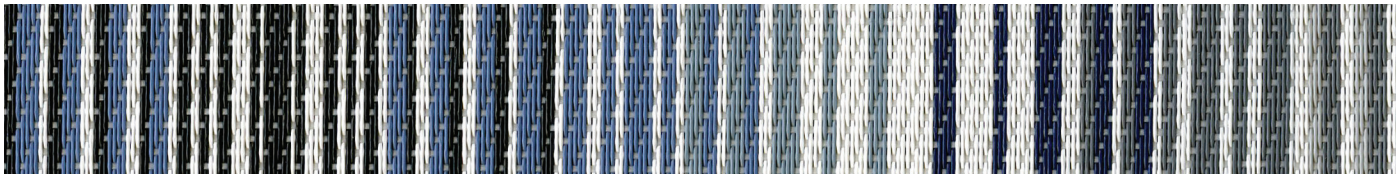




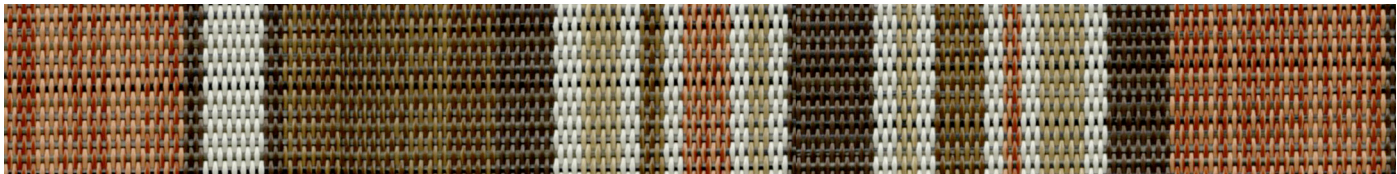
Tempo Spearmint | DCS  
3039252 | Construction: 42x14



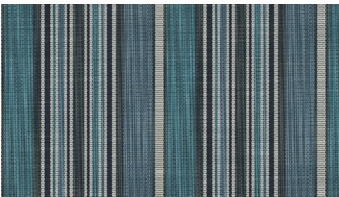
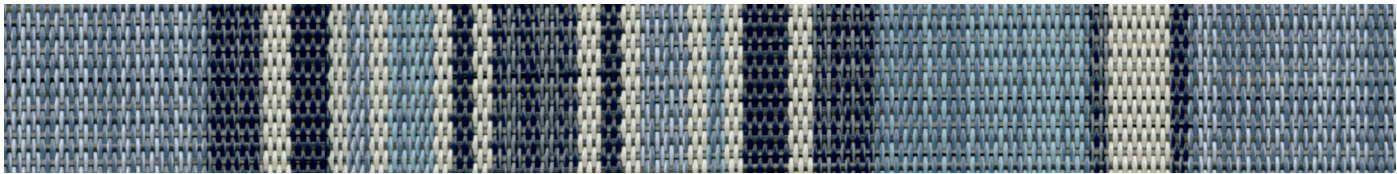
Coastline Peacock | XUM  
3025677 | Construction: 42x14



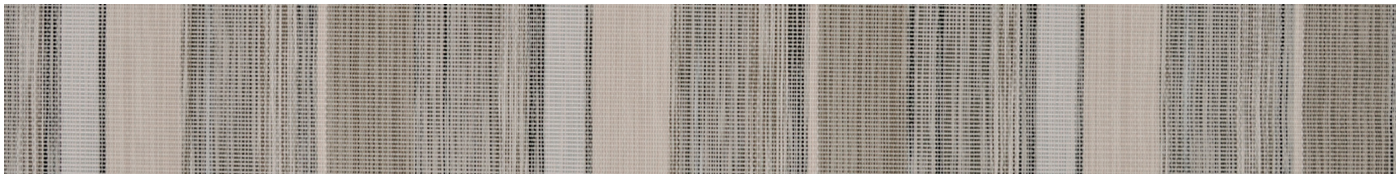
Daytripper Denim | LIZ  
3039291 | Construction: 42x14



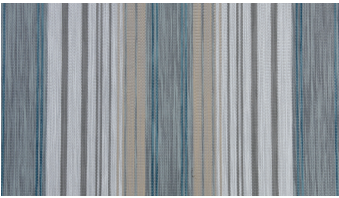
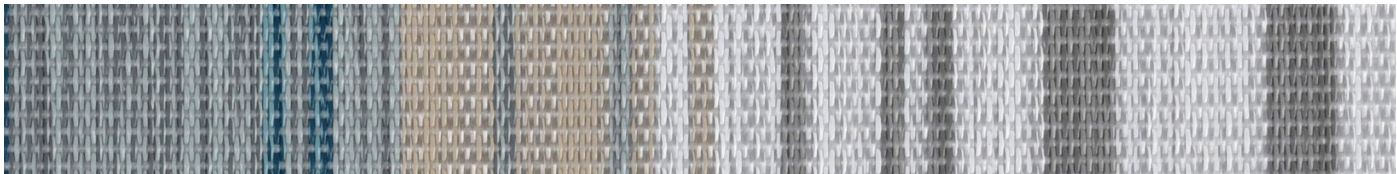
Dakota Stripe Clay | KEG  
3044371 | Construction: 42x14



Dakota Stripe Blueprint | LMR  
3044370 | Construction: 42x14



Tempo Stone | YAC  
3029009 | Construction: 42x14



Elise Stripe Chesapeake | LHR  
3038279 | Construction: 42x14





## FABRIC FEATURES

### DURABILITY/CLEANABILITY

Functional and durable, Phifertex fabrics offer excellent performance while withstanding spills, splatters and the hustle and bustle of high traffic areas. These fabrics are easy to maintain – easily cleaned with soap and water or 50/50 bleach to water solution.

### WARRANTY

Phifer offers a 3-year limited warranty for Phifertex Outdoor Fabrics. This warranty covers the fabric becoming non-functional due to loss of dimensional stability from exposure to conditions including sunlight, mildew, rot and normal atmospheric conditions. The warranty does not cover damage to the fabric from any source nor does it cover gradual fading or discoloration from atmospheric pollution or other debris. This warranty remains in effect for 3 years from the date of purchase. Phifer will provide new fabric, free of charge, to replace the non-functioning fabric. This warranty does not cover the cost of labor or other consequential or incidental expenses.



### GREENGUARD

GREENGUARD Certification ensures products have met some of the world's most rigorous and comprehensive standards for low emissions of volatile organic compounds (VOCs) into indoor air. Phifer was the first manufacturer in the outdoor fabric industry to achieve GREENGUARD certification. Certification is completely voluntary and ensures that the highest industry standards are being applied to maintain indoor air quality for the health and safety of building occupants.



### MICROBAN®

Phifertex fabrics are the only outdoor furniture fabrics in the world to include Microban protection. Microban antimicrobial protection works continuously to inhibit the growth of bacteria, mold and mildew that can cause stains, odors and product deterioration.



- Microban antimicrobial protection is infused into Phifertex fabrics for lasting protection that won't wash off or wear away for the lifetime of the product.
- Phifertex fabrics infused with Microban antimicrobial technology are ideal for any commercial or residential environment where microbes are a concern, including healthcare, hospitality, home, office, schools and institutions.

### FLAME RETARDANCE

- National Fire Protection Association, NFPA No. 101, "Life Safety Code", Class "A" rating. (Tested in accordance to ASTM E84, Surface Burning Characteristics of Building Material.) 17x11 (ASTM E84-16), 25x25 (ASTM E84-15b), 37x15 (ASTM E84-16), Plus (ASTM E84-15b).
- International Building Code (IBC), Section 803.1.1, Class "A" rating (Tested in accordance to ASTM E84).
- Upholstered Furniture Action Council Fabric Classification Test Method 1990 (UFAC) - Class "I" Rating.
- Federal Motor Vehicles Safety Standards, Section 571.302, Standard Number 302 (FMVSS 302), Flammability of Interior Materials.
- California Technical Bulletin 117-2013, Section 1, Cover Fabric Test.

